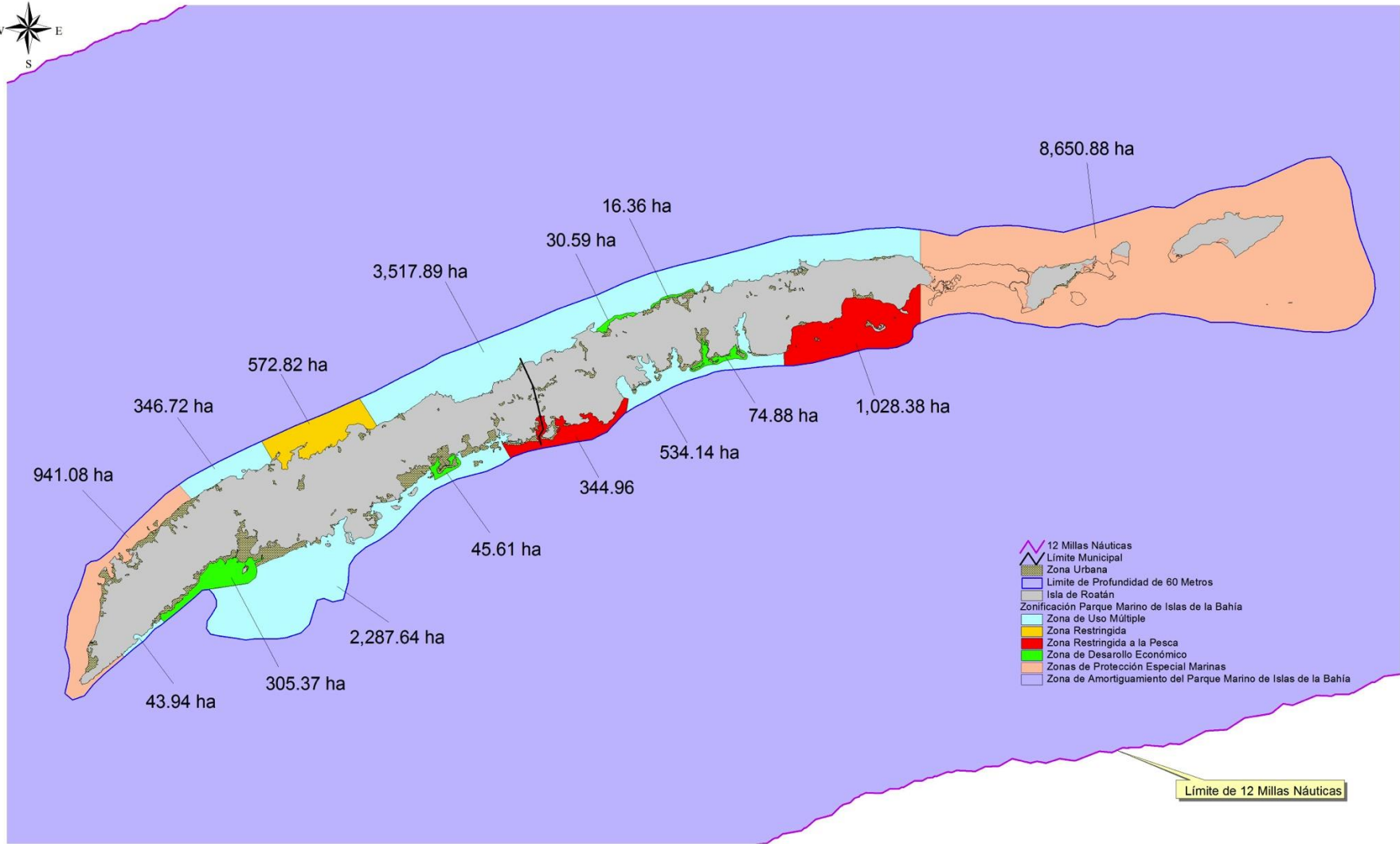


Infraestructura Marina





Límite de 12 Millas Náuticas

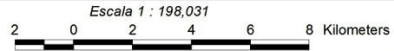
ICF
Servimos por Naturaleza



SECRETARÍA DE TURISMO
INSTITUTO HONDUREÑO DE TURISMO

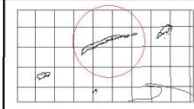
DATOS CARTOGRAFICOS

Proyección Cartográfica: Universal Transversa de Mercator
 Estereode: Clarke 1866
 Dato Horizontal: Norteamericano 1927
 Dato Vertical: Nivel Medio Mar 1985
 Fotografía Aérea: 1:20,000 / Julio 1999
 Ortorectificación Digital: Junio 2000
 Clasificación de Campo: IGN



**LÍMITES DEL PARQUE NACIONAL MARINO DE ISLAS DE LA BAHÍA
MUNICIPIOS DE ROATÁN Y JOSÉ SANTOS GUARDIOLA**

Departamento de Islas de la Bahía, Honduras, C.A.



MAYO 2009

Situación de partida



Incidentes

- Barco Langostero "Krisna" – Los Fuertes
- "Fish n Loave" – Brick Bay
- "Emma Grace" – Brick Bay
- "Tiburón" – Brick Bay
- "Princess Nicole" – Coxen Hole
- "True North" – West Bay
- "Laissez-Sair Scarborough" – French Harbor
- Collision de dos pangas West End
- 4 personas empropeladas

Objetivos:

Proveer del recurso par aun buen manejo o navegacion dentro del AMP evitando incidentes a los operadores, toursitas y obvio tambien al arrecife.



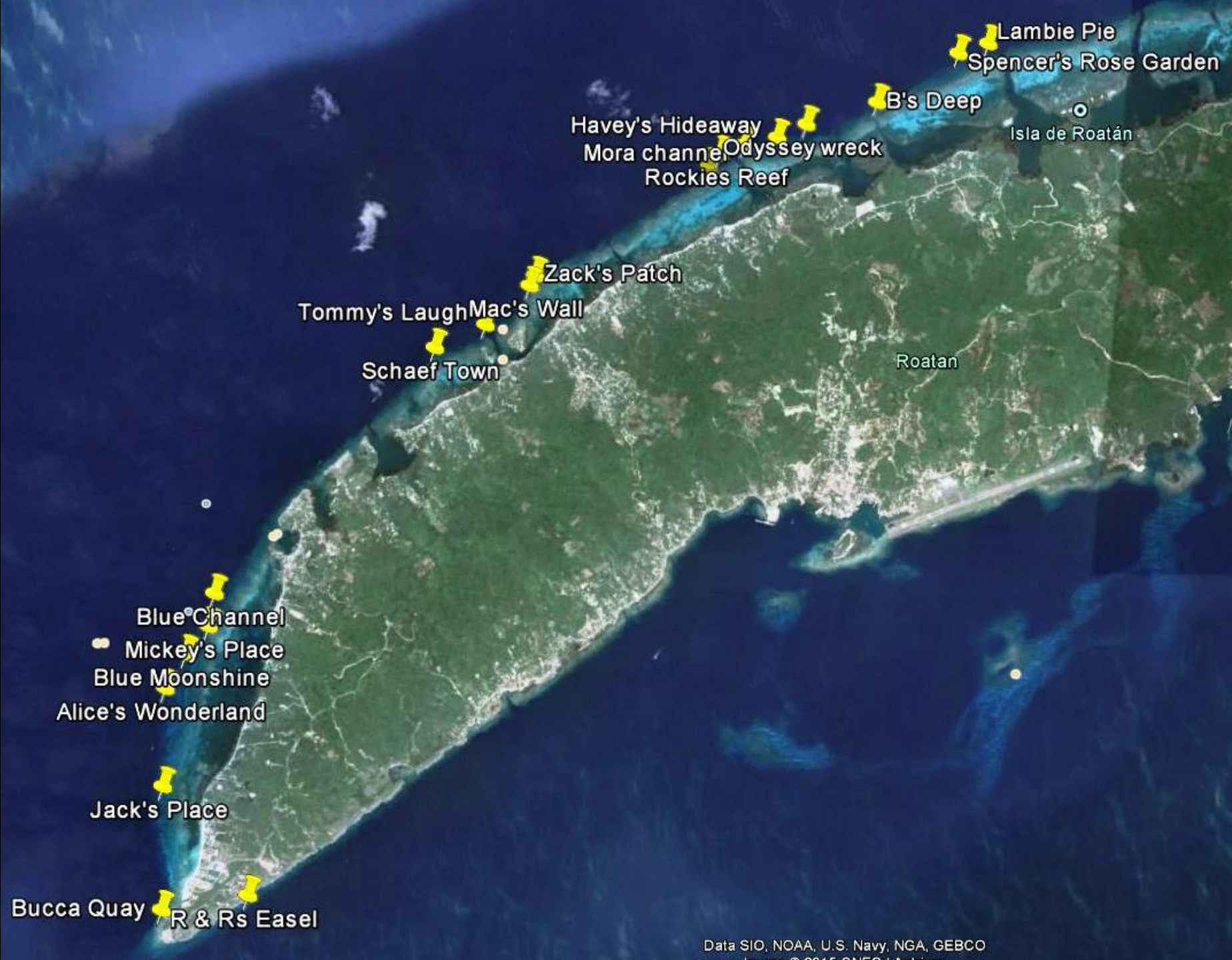
Acciones:





Se han instalado un total de 120
boyas de buceo, 17 boyas de
snorkeling y 18 boyas para veleros.

Dive Site	GPS N	GPS W	Mooring system	Depth	Dive Site	GPS N	GPS W	Mooring system	Depth
GranMarie's Sea Garden	16.22382	86.28969	Cement and chain	40ft	Vern's Drop off	16.18564	86.35768	Pin in coral	45ft
Key Hole	16.22107	86.30165	Cement and chain	70ft	Dixies	16.18359	86.35847	Cement and chain	35ft
Spencer's Rose Garden	16.21445	86.31897	Cement and chain	70ft	Moonlight	16.18331	86.35843	Cement and chain	26ft
B's deep	16.21228	86.32294	Cement and chain	20ft	Lighthouse reef	16.18293	86.35854	Concrete block	27ft
Odyssey wreck	16.21056	86.32681	Attached to wreck	90ft	El aquario	16.18147	86.35892	Cement and chain	17ft
Havey's Hideaway	16.20946	86.32970	Cement and chain	25ft	Ocean Groove	16.18139	86.35947	Cement and chain	40ft
Mora channel	16.20939	86.33089	Cement and chain	20ft	Jolly Roger 1	16.18065	86.35976	Cement and chain	30ft
Lynn's arena	16.20695	86.33351	Cement and chain	40ft	Jolly Roger 2	16.18033	86.35992	Cement and chain	35ft
Barry's reef	16.20566	86.33536	Cement and chain	50ft	Haller Deep	16.18039	86.36031	Cement and chain	45ft
Déjà vu	16.20531	86.33615	Cement and chain	20ft	Blue channel	16.17971	86.36054	Sandscrew	45ft
Four sponges	16.20492	86.33697	Cement and chain	45ft	The Bight	16.17902	86.36031	Cement and chain	28ft
Wrasse hole	16.20431	86.33703	Cement and chain	50ft	Bikini Bottom	16.17870	86.36055	Pin in coral	18ft
Spooky channel (outside)	16.20366	86.33869	Cement and chain	40ft	Octopus Acre	16.17715	86.36145	Cement and chain	40t
Spooky channel (inside)	?	?	Cement and chain	35ft	Barman's Choice	16.17606	86.36139	Cement and chain	25ft
White Hole	16.20258	86.33984	Cement and chain	25ft	Shallow Turtle Crossing	16.17568	86.36155	Cement and chain	23ft
Bears den	16.20206	86.34124	Cement and chain	28ft	Deep Turtle Crossing	16.17611	86.36224	Cement and chain	55ft
Captain Bob's	16.20187	86.34185	Pin in coral	50ft	Jolly Roger 3	16.17531	86.36152	Cement and chain	25ft
Peter's place	16.20125	86.34263	Cement and chain	50ft	Shallow sequest	16.17441	86.36154	Cement and chain	21ft
Zack's Patch	16.19998	86.34297	Cement and chain	40ft	Blue Moonshine	16.17479	86.36222	Cement and chain	45ft
Mack's wall	16.19945	86.34328	Cement and chain	45ft	Three Brothers	16.17449	86.36255	Cement and chain	55ft
Front Porch	16.20060	86.34272	Cement and chain	50ft	Slippery Nick	16.17398	86.36161	Cement and chain	20ft
Tommy's Laugh	16.19631	86.34610	Cement and chain	20ft	Jolly Roger 4	16.17341	86.36159	Cement and chain	25ft
El Aguila	16.19645	86.34693	Cement and chain	20ft	Alice's Wonderland	16.17291	86.36270	Cement and chain	45ft
El Aguila Shore	16.19628	86.34725	Cement and chain	25ft	Tabyana's 2	16.17246	86.36225	sandscrew	40ft
El Aguila Boat	16.19650	86.34742	Attached to wreck	95ft	Punchers Paradise	16.17139	86.36229	Cement and chain	40ft
Pillar coral	16.19579	86.34850	Cement and chain	25ft	Tabyana's 1	16.17055	86.36272	Sandscrew	46ft
Schaeftown	16.19462	86.34942	Cement and chain	45ft	Jumpin Jack	16.16879	86.36266	Cement and chain	40ft
Green outhouse	16.19469	86.34925	Cement and chain	28ft	Jack's Place	16.16770	86.36266	Cement and chain	40ft
Over Heat	16.19403	86.34976	Cement and chain	25ft	Buchos	16.16718	86.36249	Cement and chain	27ft
Hole in the Wallet	16.19371	86.35017	Cement and chain	30ft	Shallow Buchos	16.16679	86.36186	Cement and chain	15ft
Melissa's	16.19287	86.35061	Cement and chain	25ft	Chloe's Coral	16.16625	86.36210	Cement and chain	35ft
Robin's Nest	16.19280	86.35091	Cement and chain	20ft	Kaylee's Day Dream	16.16468	86.36155	Cement and chain	20ft
Gibson bite	16.19225	86.35153	Cement and chain	15ft	Temptation Reef	16.27320	86.60275	Cement and chain	27ft
Dennis's Dropoff	16.19135	86.35197	Cement and chain	30ft	Mandy's Eel garden	16.16371	86.36123	Cement and chain	20ft
Happily Ever	16.19104	86.35266	Cement and chain	35ft	Willie's Wonder	16.16280	86.36130	Cement and chain	20ft
Fish den	16.19041	86.35324	Cement and chain	25ft	Black rock	16.16166	86.36181	Pin in coral	90ft
Canyon Reef	16.18908	86.35427	Cement and chain	15ft	Bucca Quay	16.16091	86.36195	Cement and chain	25ft
Hole in the wall	16.18828	86.35507	Cement and chain	15ft	Texas	16.15937	86.36196	Cement and chain	35ft
The Wife	16.18741	86.35636	Cement and chain	45ft	Pablo's place	16.26558	86.60114	Cement and chain	30ft
Grape escape	16.18700	86.35666	Engine block	36ft	R & R's Easel	16.16061	86.35821	Cement and chain	345ft



Lambie Pie
Spencer's Rose Garden
B's Deep
Havey's Hideaway
Mora channel
Odyssey wreck
Rockies Reef
Isla de Roatán
Zack's Patch
Tommy's Laugh
Mac's Wall
Schaeff Town
Roatan
Blue Channel
Mickey's Place
Blue Moonshine
Alice's Wonderland
Jack's Place
Bucca Quay
R & Rs Easel



Image © 2013 DigitalGlobe

Google earth

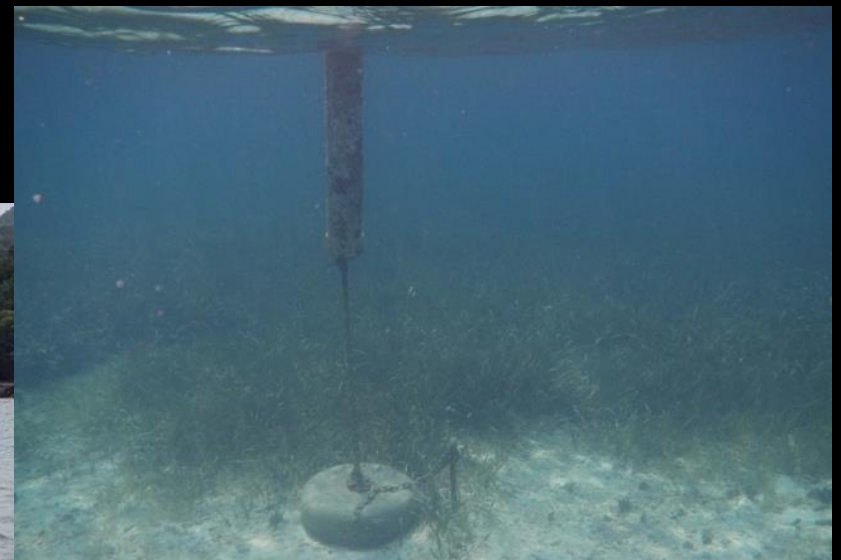
Imagery Date: 4/5/2008 1970

16°16'33.12" N 86°35'56.73" W elev 10 ft

Eye alt 2000 ft

Se han instalado un total de 15 boyas de pesca en West Bay y Banco Cordelia.





Boyas de Informacion:

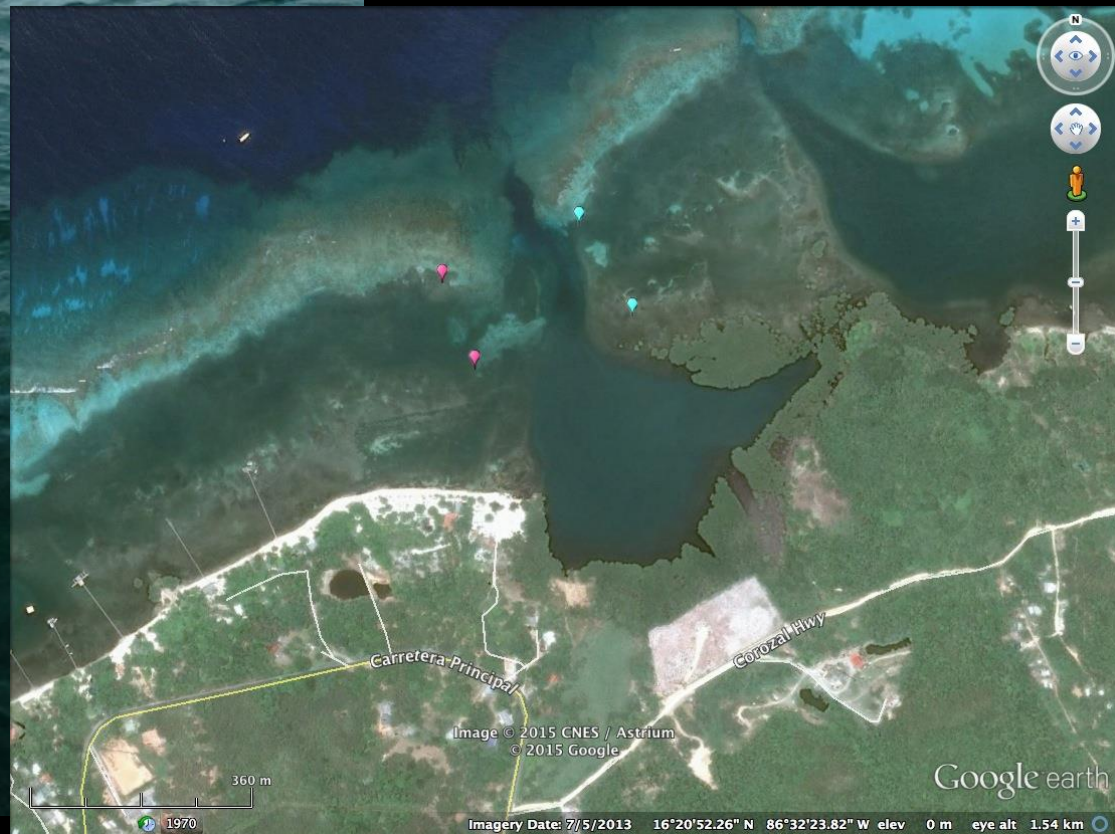
- Canales de navegacion
- Zonas de Nado
- Control de Velocidad
- Areas de precaucion

Se instalaron 30 boyas a lo largo de la ZPEMSW.



Boyas de delimitacion de la ZPEMSW:

- 2 de la ZPEMSW de color rosa
- 2 de la ZUM de color azul



Boyas demarcadoras de canales de entrada:

- 40 boyas instaladas
- 35% de ellas con señalizador de luz solar
- Todos con cinta reflejante verde y rojo



Resultados obtenidos :

- Reduccion de anclaje sobre el arrecife.
- Centros de buceo y operadores reducen costos de mantenimiento y de combustible de sus operaciones por el uso de las boyas de amarre.
- Pescadores manejan sus boyas y sienten empoderamiento y reduciendo anclaje por bloque.
- Aumentar la seguridad de entrada y salida de embarcaciones a traves de los canales entre el sistema arrecifal.
- Con las boyas de informacion tenemos mejores herramientas en el control de la navegacion y tambien ha ayudado a reducir incidencias a las velocidades.

Resultado ideal menor numero de incidentes marinos y/o de lesiones por negligencia, brindando una mejor experiencia a los visitantes y locales que usan el area.

!! Muchas Gracias!!

